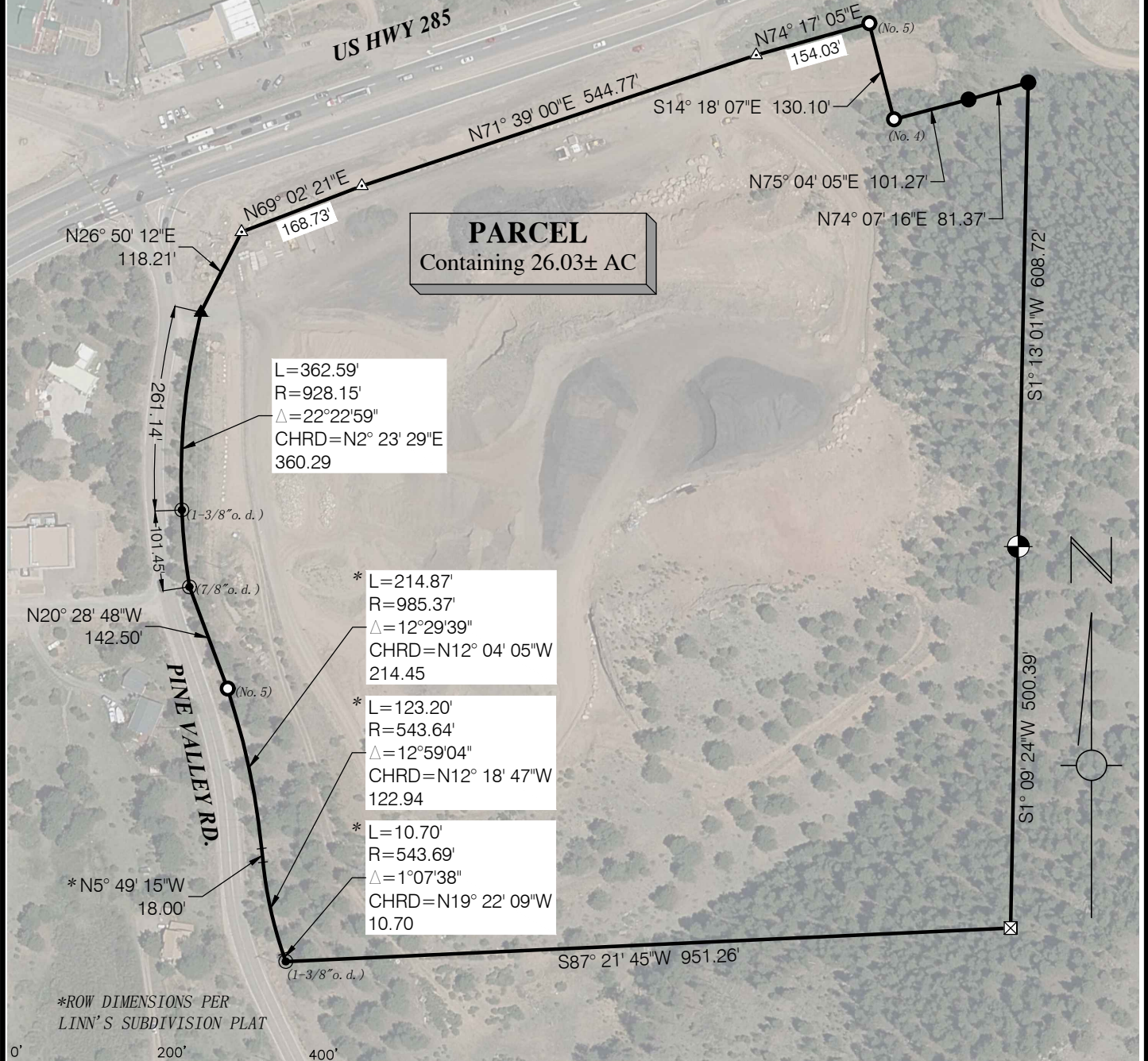


EXHIBIT

SE 1/4 SECTION 1, TOWNSHIP 07 SOUTH, RANGE 72 WEST 6th P.M.
SHEET 1 OF 1



Note: This exhibit does not represent a monumented survey and is intended only to depict the attached property description.

JEFFERSON
COUNTY COLORADO

DIVISION OF
TRANSPORTATION AND ENGINEERING
100 JEFFERSON CNTY PKWY, STE 3500
GOLDEN CO, 80419 (303) 271-8495

DATE: 7/31/19

DRAWN BY: J.A.L.

PINE JUNCTION GRAVEL PIT LEASE PROPERTY BOUNDARY

US 285 & PINE VALLEY RD

FILE: G:\PROJECTS\5058_R&B Misc\Pine Pit\4 CAD\Dwg\5058_Exhibit.dwg